



The Captain Enoch Remick House

This important structure is listed on the National Register of Historic Places for its influence on the town of Tamworth, NH, and for its significant architectural qualities.

When the house was built in 1808 it was built in a Federal Architectural style, but later additions resulted in Greek Revival and Italianate influences. It was passed down through six generations of Remicks, who all contributed greatly to local history and lore.



History of the House

...Continued from inside panel

- 1929** Edwin C. Remick graduated from Tufts University and joined his father's medical practice—he and his wife, Marion Miles Remick, lived nearby in what had been the Wiggin House
- 1935** The senior doctor died leaving the medical practice to his son
- 1980** Marion Miles Remick passed away
- 1993** Dr. Edwin C. Remick died and, under the terms of his will, he left his property in a trust that formed the Remick Country Doctor Museum & Farm
- 1996** Remick Country Doctor Museum & Farm opened to the public

Museum & Farm Hours

WINTER | SPRING | LATE FALL
Monday through Friday • 10 a.m.–4 p.m.

EARLY SUMMER | EARLY FALL
Also open Saturdays • 10 a.m.–3 p.m.

SUMMER
Monday through Friday • 9 a.m.–5 p.m.
Saturday • 9 a.m.–4 p.m.

Museum & Farm Admission

\$5 per person • Children ages 4 & under, FREE
Free admission for Tamworth residents every Friday
Memberships are available—Visit our website or ask about becoming part of the Remick legacy today!



58 Cleveland Hill Rd., Tamworth Village, NH 03886
603-323-7591 • 800-686-6117
www.remickmuseum.org

THE CAPTAIN ENOCH REMICK HOUSE

ON THE NATIONAL REGISTER OF HISTORIC PLACES

1808-1993



2016 GUIDED TOURS

Saturdays Only
May 28–June 25 | September 10–October 8
House Tour 11AM

Monday–Saturday | June 27–September 3
House Tour 11AM

A Visit to the Doctors Remick Tour 1PM
CHECK IN AT THE MUSEUM CENTER

Architectural Points of Interest



Palladian Window

This window is different from a traditional Palladian window because of the louvered arch that tops the window



Flat-Roofed Portico

This flat-roofed portico is held up by chamfered posts; the frieze is ornamented with dentils and modillion blocks



Pedimented Gable

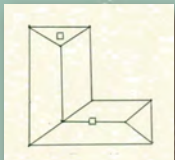
The gable of the house is detailed with dentils, and also contains a peaked gable window



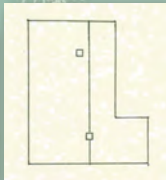
Chamfered Posts

This type of pillar was commonly used in 18th- and 19th-century American architecture

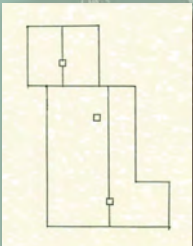
Structural Evolution of the Captain Enoch Remick House



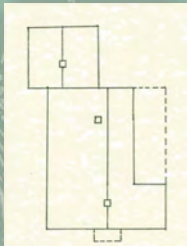
circa 1808



circa 1830



circa 1850



circa 1885

Murals

Detailed murals were painted in the Enoch House from 1830–1850 in the original entryway, what was the tavern, and a second-floor guest room. The artist, John Avery, was born in Deerfield, NH in 1790. He lived in Wolfeboro, NH, from 1830–1871 and was known in the area for painting murals in many public buildings. The painting is stylistically representative of Avery's work, with its mustard-yellow backgrounds, lumpy hills, trees, a stagecoach, and delicate curlicues.



History of the House

- 1779** The property where the house stands was purchased by Enoch Remick, a shipwright from Newmarket, NH
- 1808** Enoch's fourth, and youngest son, John, also a shipwright and joiner, built the house
- 1820s** Captain Enoch Remick moved into the house and opened an inn; the house also served as a stop- and change-over station for the Center Harbor–Conway stage coach route; Captain Enoch Remick was the first sheriff of Carroll County
- 1867** The house was sold to Nathaniel Hubbard who married Sarah Remick, the daughter of Captain Enoch Remick, in 1868; Nathaniel was one of the wealthiest men in Tamworth, and their farm was one of the most prosperous
- 1904** Upon Sarah's death, her real estate was split between her three nephews because she had no children of her own—one nephew, Dr. Edwin Remick, bought out his siblings' inheritance and moved into the house with his wife, Emily, and baby boy, Edwin C. Remick, and opened a medical office out of the home
- 1911** Emily Crafts Remick, the wife of the Senior Doctor, passed away from pneumonia at age 49

Continued on back panel...